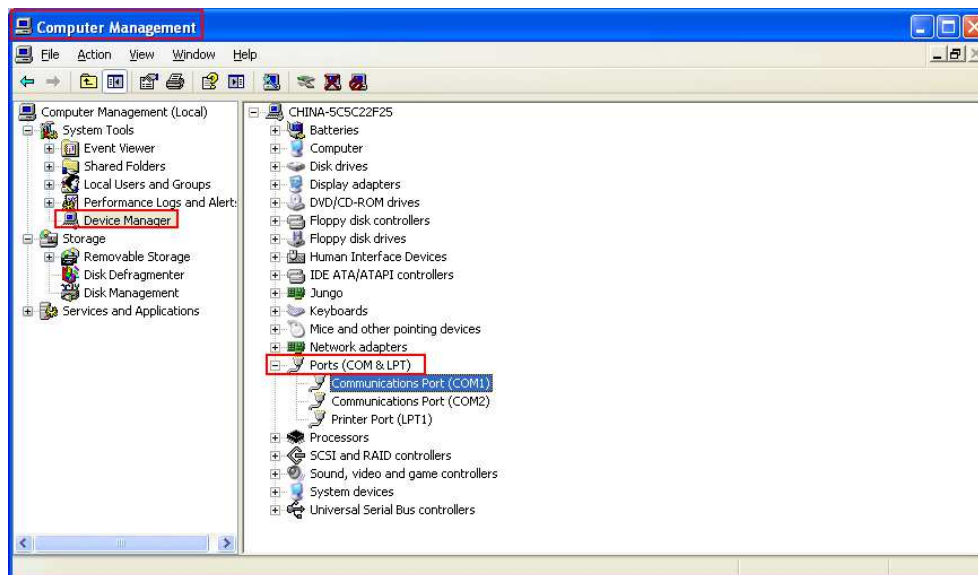


Firmware Update SOP for IC4-KMS6000-48

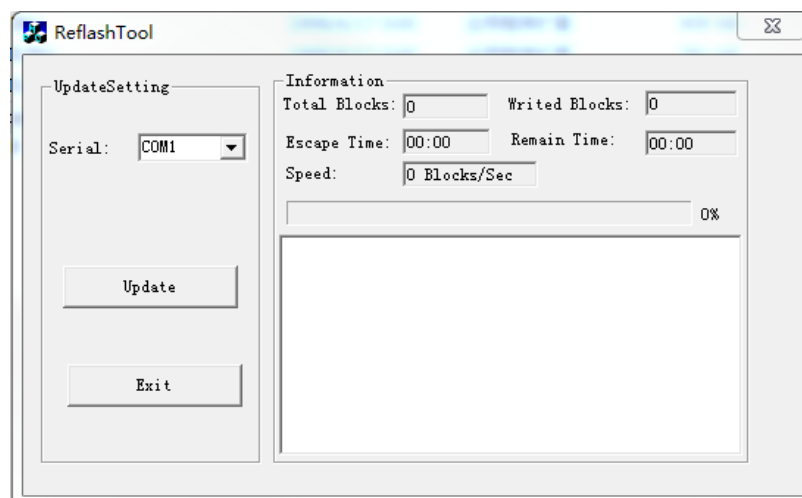
Step1: Connect the DC power or battery (Must be higher than 46V) to the battery connector, then switch on the inverter.

Step2: Check COM port number you are using in Computer management >> Device manage >> Ports(COM & Port).

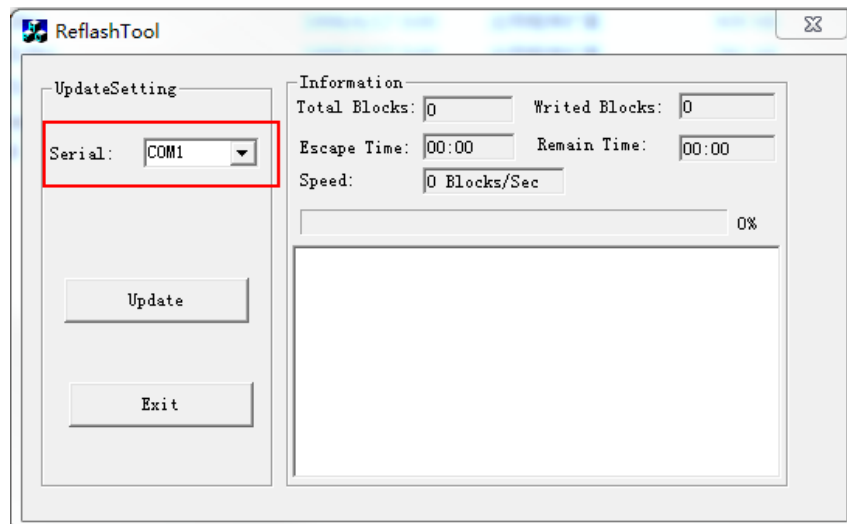
Note: Make sure all application communication software using this COM port is closed, like Monitoring software Watchpower.



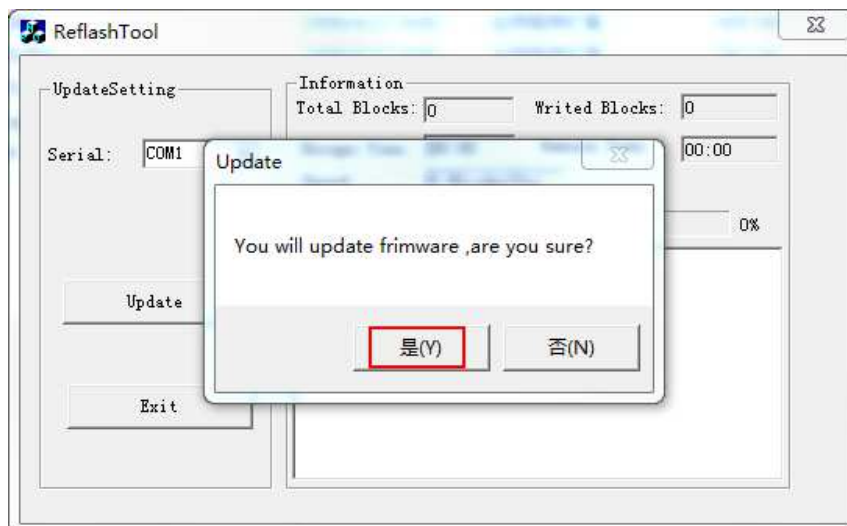
Step3: Run the “ReflashTool_Xseries.exe” software.



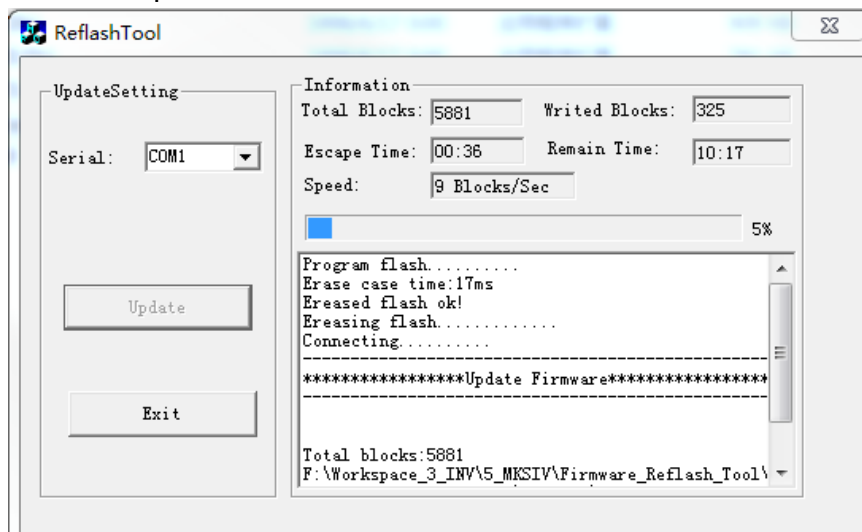
Step4: Click serial check box to select the right COM port (checked in Step 3)



Step5: Click “Update ” button, select ‘Yes’ to start the firmware update



Step6: Firmware update started several seconds later, don't close the software



Step7: When the processing bar is up to 100%, a dialog will pop to remind you

the programming is successful! Now the firmware of Inverter is updated completely!



Step8: Close the reflash software if no need to update the firmware for another inverter.