





Adjustable Solar Panel Mounting Brackets



Images show different angles of the solar panels that can be achieved using the brackets

Parts included:

Short Supports x2	Rubber Pads x4
	
Long Supports x2	Ground Screw Set (8 screws)
	

Installation Instructions:

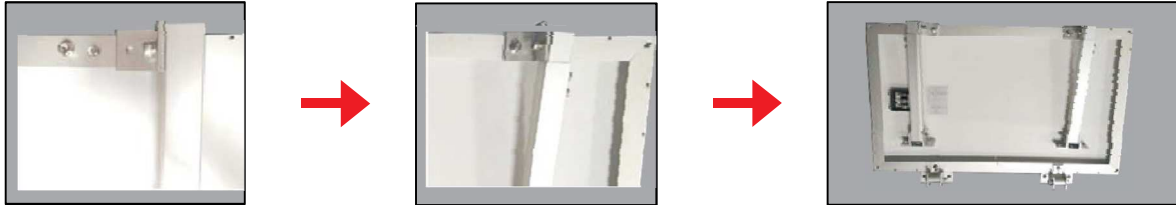
Step 1:

Fix the short supports on to the frame of the solar panel



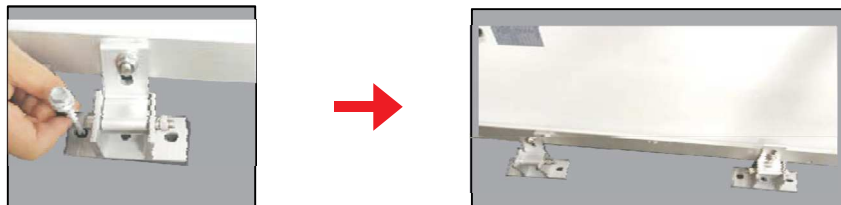
Step 2:

Fix the long supports on to the frame of the solar panel



Step 3:

Mount the short supports on the surface using the rubber pads and screw set provided



Step 4:

Adjust the length of the long supports depending on the chosen angle of the solar panel. Mount the long supports to the surface using the rubber pads and screw set provided.



Take extra care when fixing the base of each long support, as their position in relation to the short supports will determine the range of the solar panel tilting angle:

- for large (steep) tilt angles of the solar panel, position the bases of the long supports closer to the bases of the short supports
- for small (shallow) tilt angles of the solar panel, the bases of the long supports should be positioned further away from the bases of the short supports



Step 5:

Ensure that all screws and nuts are fastened tightly to secure the system in place.